**AUTHOR:**

Carmen Bogan

ILLUSTRATORS: Floyd Cooper and Daria Peoples

A trip to a national park allows Tasha to connect with others and find her voice.

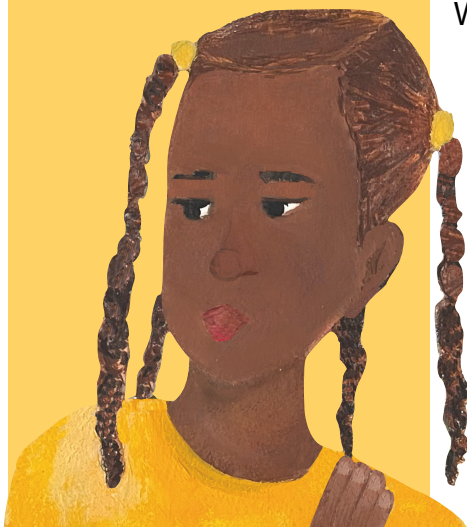
Ages: 4 to 8 years

ATOS Reading Level: n/a

Lexile: n/a

ISBN: 9781951179045

Copyright: 2024



Tasha's Voice

What would you say about the park?

What is STEAM? Learning through Science, Technology, Engineering, the Arts, and Mathematics. Through STEAM, children problem solve, innovate, create, and collaborate.

STEAM Topics in this Book: exploration, environment, nature, observation, outdoor recreation

Activities To Do Together:

City, state, and national parks belong to us all and provide a space where everyone can connect with nature. Time spent outdoors supports physical health and mental well-being. Use *Tasha's Voice* to spark conversations about nature, exploration, and environmental stewardship.

Before reading the book:

- Look at the book's cover together. Ask your child, "Where do you think this story takes place? Why do you think so?"
- Ask your child to tell you about something they enjoy doing outside.

While reading the book:

- Compare the park that Tasha and her classmates visit to a park your child has visited. Discuss any similarities your child noticed with the animals, plants, and terrain.
- Look at the page with the school bus. Compare what you see on the page. What is different about the right and left sides of the pages?

When you have finished reading the book:

- Go outside and listen carefully. What do you hear? What do you think is making the sounds you hear? Which sounds are made by animals? The wind? Machines?
- Investigate how to become a Junior Ranger with your child. The Junior Ranger Program is a free program offered by the national and state park systems. It supports children's understanding of our parks' natural and cultural resources. It encourages exploration, discovery, and stewardship for parks, nature, and outdoor spaces.

Illustrations (c) 2024 Floyd Cooper and Daria Peoples

Questions for STEAM Thinking:

1. Tasha described the park as, "The best park ever!"
What makes a park a special place for people to enjoy?
2. What would you like to do at a state or national park?
3. How could you help to take care of parks so they remain special places for everyone to enjoy?
4. What do you think Ranger Jessie meant when she said, "This is your park! Explore!"?
5. How do you think people benefit when they spend time in nature?
6. How does Tasha change throughout the story? Why do you think this happens?

Early Math Project Resources:

Visit [Tasha's Voice](http://countplayexplore.org/book/tashas-voice) (countplayexplore.org/book/tashas-voice) to find activities and related California Learning Foundations, Mathematics Standards provided by the California Department of Education, and/or Next Generation Science Standards for this book.



Vocabulary

STEAM words found in the story:

bank, behind, breeze, creek, giant, hundreds, meadow, miles, mountain, trunk, wildflowers

Related STEAM

words: ecology, environment, nature

Words to build reading comprehension:

ancient, beamed, creatures, disappear, distance, gasped, gazed, hazy, hues, imagined, jerked, lagged, preparing, rustling, sprinting, sycamore, towering, wonders

Related Books:

Where's Rodney? by Carmen Bogan; *Fatima's Great Outdoors* by Ambreen Tariq; *Hiking Day* by Anne Rockwell

Click this link to the [World Catalog](http://WorldCatalog) or enter bit.ly/43iJIJn to find *Tasha's Voice* in the public library.